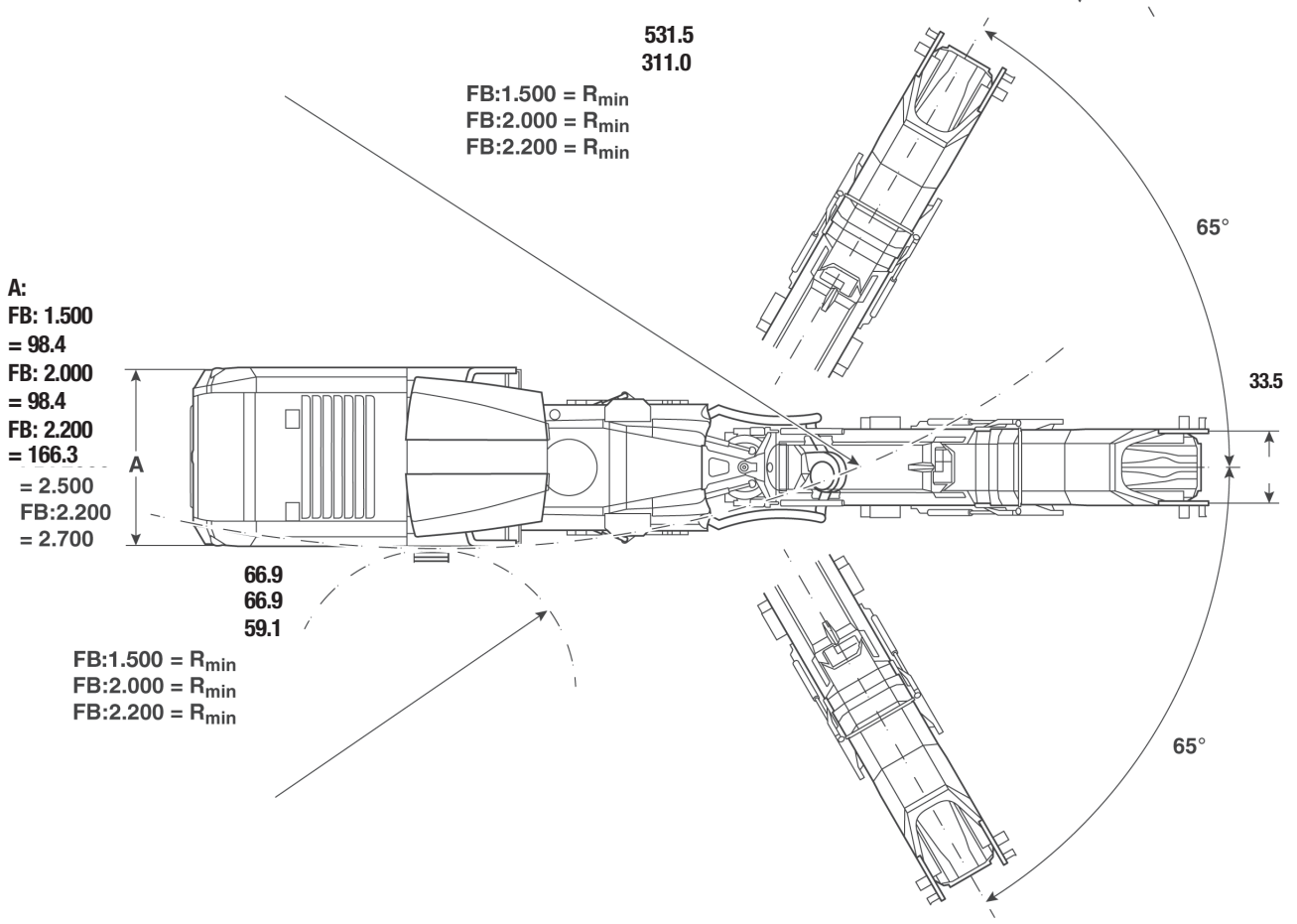
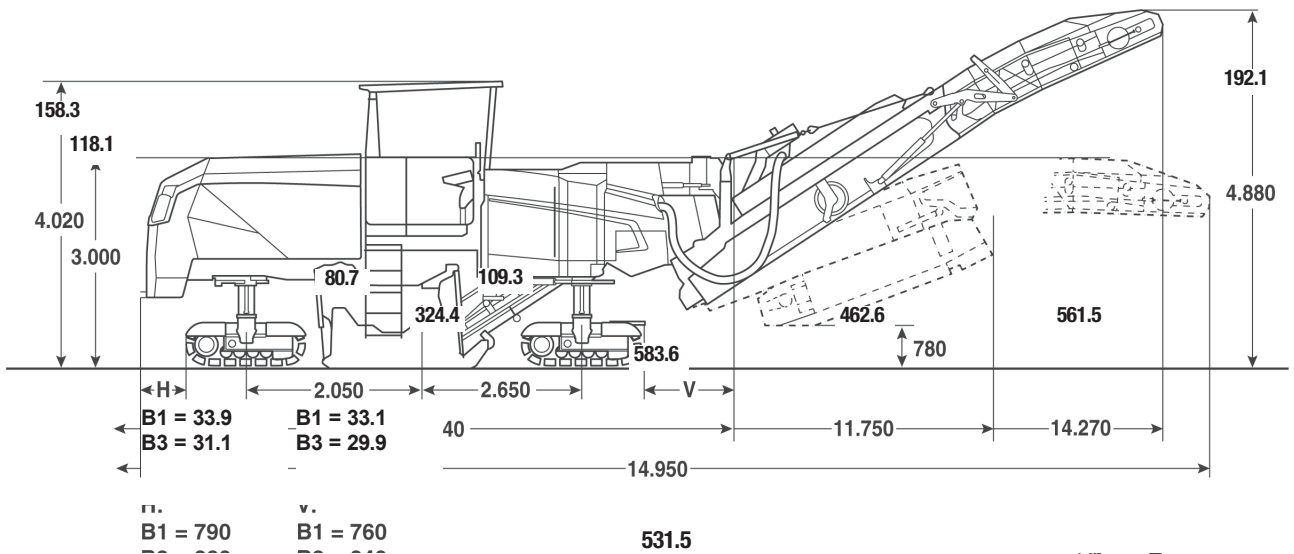


TECHNICAL DATA

COLD PLANER (STAGE V / TIER 4f)

BM 1500/65, BM 2000/65, BM 2200/65





Technical Data

Milling Drum Speed

	BOMAG BM 1500/65	BOMAG BM 2000/65	BOMAG BM 2200/65
Working width max.....in	59.1	78.7	86.6
Working depth.....in	0 – 13.8	0 – 13.8	0 – 13.8
Linespace.....in	0.7	0.6	0.6
Cutting diameter.....in	40.2	40.2	40.2
No of tools.....	119	162	174
Milling drum speed.....rpm	variable, 90, 105, 115	variable, 90, 105, 115	variable, 90, 105, 115

Drive Train

Manufacturer.....	Cummins	Cummins	Cummins
Type.....	X15	X15	X15
Cooling.....	Liquid cooled	Liquid cooled	Liquid cooled
Cylinders / Displacement.....cm ³	6 / 14,900	6 / 14,900	6 / 14,900
Performance.....kW / PS	470 / 640	470 / 640	470 / 640
Idle at rated Power.....rpm	1,900	1,900	1,900
Max Torque.....Nm / rpm	2,778 / 1,400	2,778 / 1,400	2,778 / 1,400
Fuel consumption, at max Torque / at rated Power.....g/kWh	218 @ 1,900	218 @ 1,900	218 @ 1,900
Generator.....V / A	24 / 190	24 / 190	24 / 190
Battery.....V / Ah	2 x 12 / 200	2 x 12 / 200	2 x 12 / 200
Emission level.....	Stage V / Tier 4f	Stage V / Tier 4f	Stage V / Tier 4f

Driving Characteristics

Transport Speed.....mph	0-3.7	0-3.7	0-3.7
Working speed.....ft/min	30	30	30
Crawlers (B1).....in	61.0 x 10.6 x 595	61.0 x 10.6 x 595	61.0 x 10.6 x 595

Capacities

Fuel.....gal	317	317	317
Water.....gal	860	860	860
Hydraulic oil.....gal	53	53	53

Loading System

Conveyor width, inner /outer.....in	33.5 / 33.5	33.5 / 33.5	33.5 / 33.5
Theoretical discharge capacity.....yd ³ /h	19.1	19.1	19.1
Discharge height.....inch	192	192	192

Weights

Max. Operating Weight (incl. Options).....lb	73,634	73,634	74,516
Operating Weight CECE.....lb	59,525	59,525	60,296
Basic Weight.....lb	54,344	54,344	55,116

Additional weights for Options

Canopy.....lb	815	815	815
Dust reduction system.....lb	355	355	355
Compressor.....lb	110	110	110
Ballast 1.....lb	2,150	2,150	2,150
Ballast 2.....lb	1,830	1,830	1,830
B3 Track.....lb	1,325	1,325	1,325
Auxiliary unit.....lb	330	330	330
Scanning FW.....lb	285	285	285

Technical modifications reserved. Machines may be shown with optional accessories. Actual machine weight depends on the respective configuration.

Standard

Milling technology

- Milling drum LA15 including wear protection on the sides
- BOMAG BMS 15 EVO exchangeable toolholder
- 3 Milling-Drum-speeds, 100, 112, 130
- Proportional adjustable water injection, 0-12 l/min
- Automatic water saving device
- Levelling, 2 sides + slope
- Wear-free, digital Milling depth display
- Proportional Milling depth adjustment
- Two proportional speeds for Milling-depth-adjustment
- Hydraulically operated side-plates with 19.7 inch (right) and 15.7 inch (left) stroke
- Hydraulically operated front mouldboard
- Hydraulically rear mouldboard with adjustable preload-pressure
- Right side-plate for fast Drum-exchange
- Automatic load-control
- Automatic distribution of traction
- Hydraulically foldable Conveyor with +65° swivel angle
- Camera system: 1x discharge belt; 1x on the back
- BOMAG Dual Filtration
- BOMAG Easy Cut
- BOMAG Easy Level

Drive Systems

- 4 crawler B1 size steerable, front or/and rear
- Crab walk
- Variable transport speed
- Variable operating speed
- Mechanical Drum-drive

Operation comfort

- Fully vibration-isolated operator-platform
- Comfort zones at the standing areas for fatigueless operation
- Adjustable dashboards
- Standardized self-explanatory, well-arranged dashboards
- Large storage at ground level
- Service- and maintenance-points ergonomic concentrated
- Large Storage compartment at the operator platform including 24V plug and flexible layer
- Diesel and AdBlue fill comfortable and safely place at the operator station
- BOMAG Fast Select for a fast machine operation

Safety & environmental protection

- Noise optimized design
- Liquid cooled engine following latest emission rules without hot exhaust jet to the back
- Integrated working lights – 37,500 lm
- Rotary-beacon
- Mirrors
- CE-conform safety-package with emergency-stop-switches
- Back-up-alarm

Optional

Basic machine

- Track chains B3 size
- Storage compartment for cutting tools on the track chains
- Weather protection roof
- Plexiglas weather protection for the side railings
- Water filling pump
- High pressure cleaner
- Hose reel
- Dust reduction system
- ION DUST SHIELD
- Milling drum turning device for easy tool change
- Compressed air system
- Additional motor for auxiliary function & emergency drive function
- Advanced lighting package – additional 142,750 lm
- Ballast weights
- Slewable standing support
- Vandalism protection

Milling technology

- Quick-exchange drum-system
- Milling-Drum 1500, BMS 15 EVO, LA18
- Milling-Drum 2000, BMS 15 EVO, LA18
- Milling-Drum 2000, BMS 15 EVO, LA15
- Milling-Drum 2200, BMS 15 EVO, LA15
- Milling-Drum 2000, BMS 15 EVO, LA8
- Milling-Drum 2200, BMS 15 EVO, LA8
- POWER DRUM 2000, BMS 15 EVO, LA23
- POWER DRUM 2200, BMS 15 EVO, LA23

Levelling Systems and electronic support

- Additional external BOMAG Easy Level Display
- 2 scanners left & right in front of the milling box
- Camera system: 2 additional camera's: 1x downholder; 1x rear scraper
- BOMAG TELEMATIC

